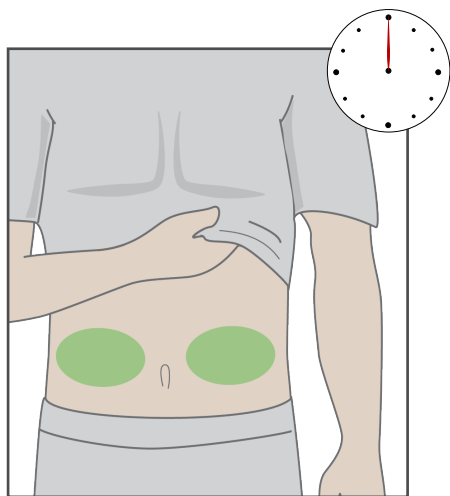


WHAT WORKS FOR ME: KEEPING THE SENSOR PATCH ON

Everyone's skin is different. Extra care may help you keep your sensor on for the entire sensor session. Here are tips some Dexcom customers have used successfully. These tips might be helpful for some people, but are not required. Use these with your product instructions.

BEFORE INSERTING THE SENSOR

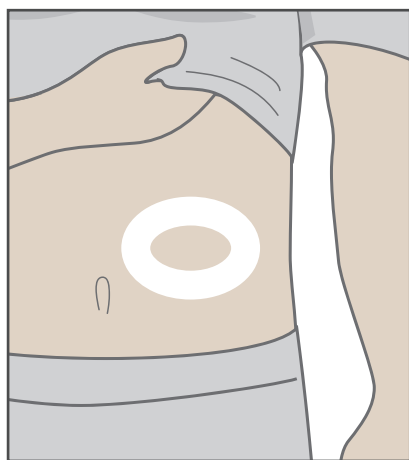


Timing

Skin types vary, and for some people, it may take awhile – overnight, for example – for the patch to fully dry and stick. During that time, keep your skin dry and avoid doing things that would make you sweat. If inserting a new sensor before bed, make sure you're through the warmup before you go to sleep.

Placement

The patch stays on best when it isn't where your skin folds when you bend or near waistbands. Change sites with every sensor session.

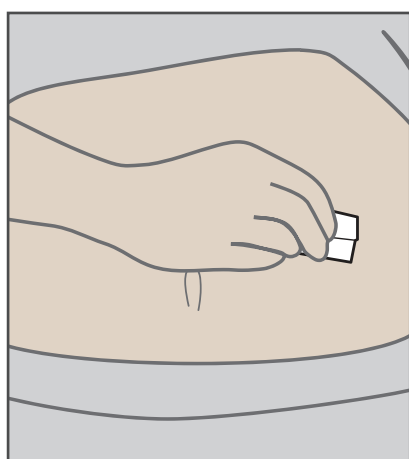


Preparation

- Sensor site should be flat, clean, and completely dry before you insert the sensor.
- Extra adhesive (such as Mastisol or SkinTac) tip: Put on additional adhesive under the patch, avoiding the spot where needle inserts. Let dry.

Site tips

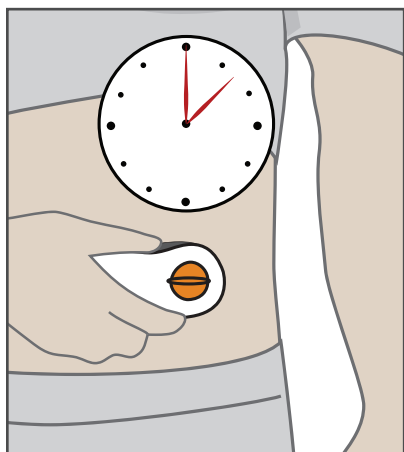
- Apply the patch to areas without much hair.
- Remove any adhesive residue from previous sensors. Consider using an oil or adhesive remover (such as Uni-solve, Detachol, or Tac Away).
- Clean and dry the site **twice**:
 - First, wash with soap and water. Dry.
 - Then, scrub site thoroughly with an alcohol wipe.
 - Let dry completely.



Sensor tips

- Store your sensors in a dry place between 36° - 86° F.

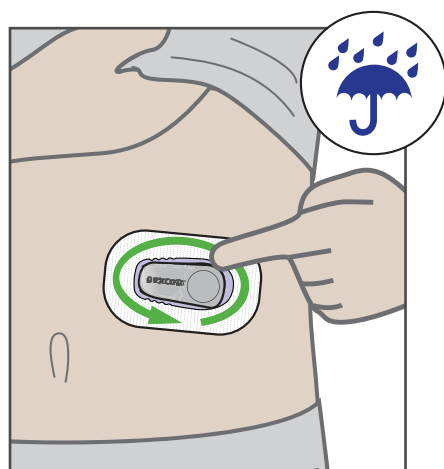
DURING SENSOR INSERTION PROCESS



Press and hold

After removing the labels from the adhesive patch, to help make the patch stick better, press and hold the sensor applicator firmly to your skin – for about a minute. Then release the pressure before pushing the button to insert the sensor.

AFTER INSERTING THE SENSOR

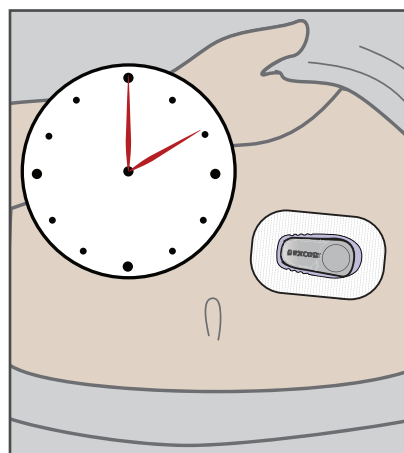


Rub patch

Immediately after inserting, smooth out any wrinkles in the patch. Then rub entire patch 3 times. For extra pressure, consider using the back of your fingernail.

Allow drying time

Different skin types may affect how long the patch takes to fully dry and stick. Consider keeping the site dry for awhile – overnight for example.



Timing for Medical tape or Dexcom overpatch

Use the overpatch or medical tape to help keep the patch on your skin.

- If your skin has higher oil/moisture content, consider putting on the overpatch or medical tape immediately after inserting the sensor.
- If your skin is drier or less elastic, consider waiting to see if the patch edges peel off your skin before you put the overpatch or medical tape on over the adhesive.

For more adhesive help, in the Dexcom app go to **Settings > Contact > Technical Support > Online Support** or dexcom.com/tech-support.

Dexcom

© 2019 Dexcom, Inc. All rights reserved.

Dexcom and Dexcom G6 are registered trademarks of Dexcom, Inc. in the United States and/or other countries.

LBL017912 Rev001